

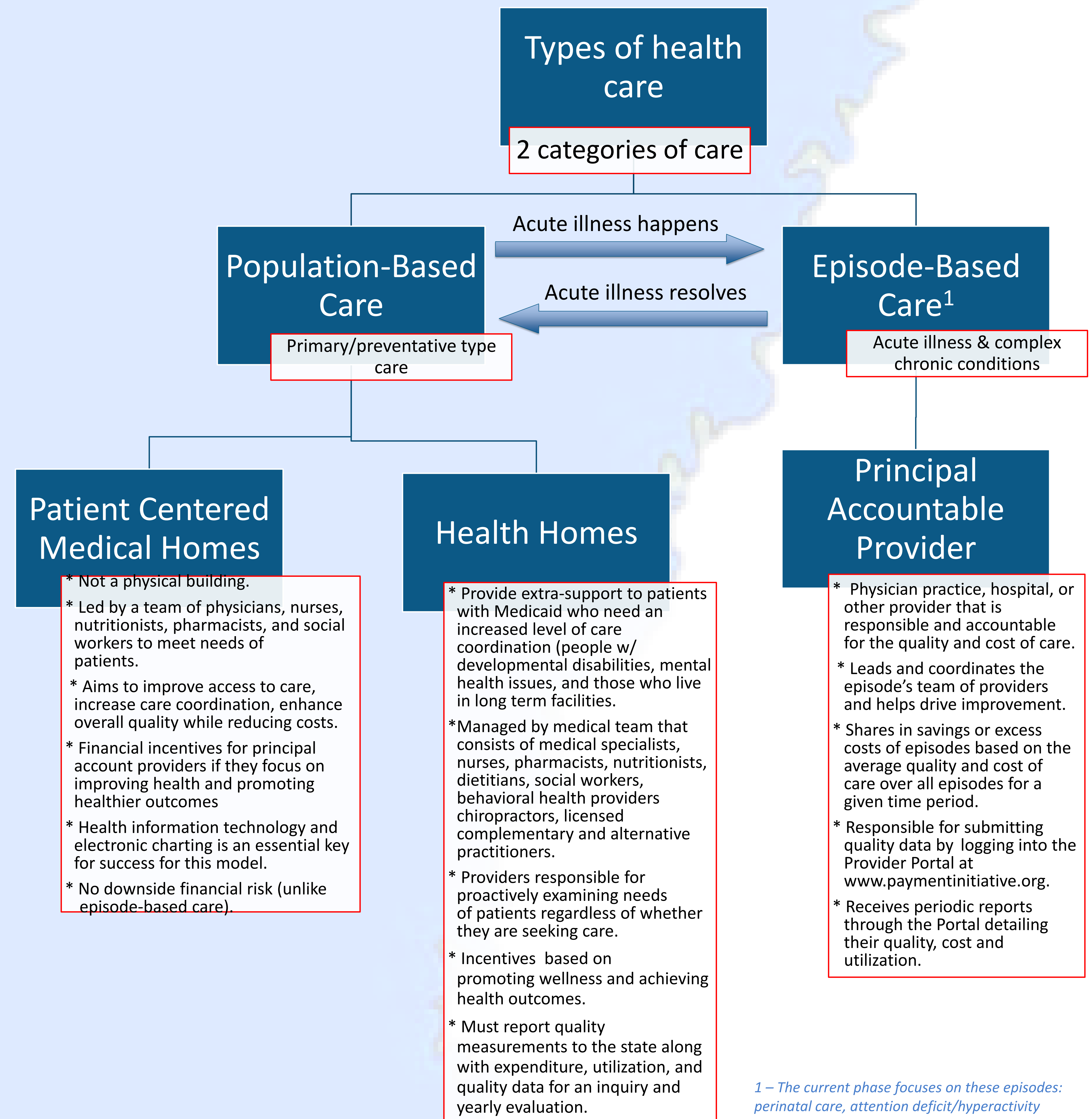
Arkansas Health Care Payment Improvement Initiative

By Rachel Choate, Ashley Cole, Kay Dukes, & Sarah Staples

What is the Health Care Payment Improvement Initiative?

- ★ Arkansas's approach to revamping the way that it provides compensation to health care providers.
- ★ The payment structure will reduce healthcare costs by moving away from a fee-for-service structure to one that rewards care collaboration and improved outcomes through financial incentives.
- ★ Focuses on quality care, which leads to improved patient outcomes.
- ★ Developed through a partnership between state agencies and private insurance companies.

How is the initiative organized?



How do the different parts of the initiative work together as a whole?

- ★ Individuals use their Medical Home or Health Home for primary and preventative care.
- ★ When facing an acute illness, the patient consults with primary care provider to explore treatment options.
- ★ Actual care for the acute illness will occur through the Episode-Based care.
- ★ Once the condition is remedied, the patient will again return to their Medical Home or Health Home to receive care.
- ★ If another acute condition arises, the Medical Home or Health Home will again assist patient in accessing appropriate Principal Account Provider.

¹ – The current phase focuses on these episodes: perinatal care, attention deficit/hyperactivity disorder, upper respiratory infection, hip and knee replacement, and congestive heart failure.

References
 Arkansas Center for Health Improvement (2012, January). Arkansas Medicaid Primer. Retrieved from <http://www.achi.net/publications/120120%20Medicaid%20Primer.pdf>
 Arkansas Department of Human Services (2012, September, 21). State Innovation Plan. Retrieved from http://www.paymentinitiative.org/referenceMaterials/Documents/SIMS%20111.%20%20State%20Innovation%20Plan%202012%2009%2021%20%20Final%20_%20TO%20SUBMIT.pdf
 Kaiser Family. (2011). Medicaid's new "health home" options. Retrieved from <http://kaiserfamilyfoundation.files.wordpress.com/2013/01/8136.pdf>
 Medicaid.gov. (2011). Retrieved from <http://www.medicaid.gov/Medicaid-CHIP-Program-Information/By-Topics/Long-Term-Services-and-Support/Integrating-Care/Health-Homes/Health-Homes.html>
 Medicaid.gov. (2012). Retrieved from http://www.medicaid.gov/State-Resource-Center/Medicaid-State-Technical-Assistance/Health-Homes-Technical-Assistance/Downloads/Health-Homes-FAQ-5-3-12_2.pdf
 National Conference of State Legislatures (2013). The Medical Home Model of Care. Retrieved from http://www.ncsl.org/issues-research/health/the-medical-home-model-of-care.aspx#Payment_Reform

For the latest information on the initiative, visit www.paymentinitiative.org.